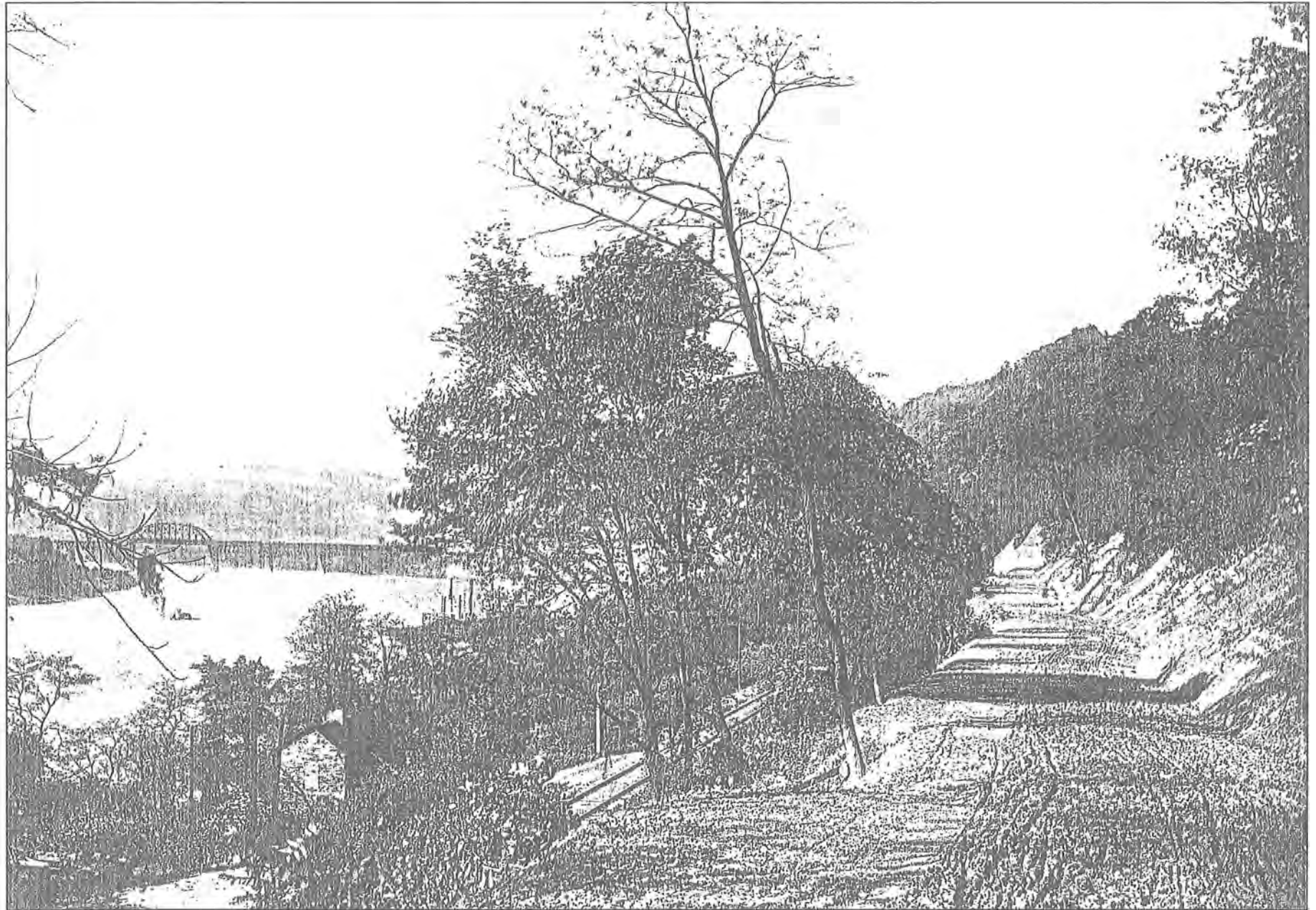


**Photos  
of the  
road work for the  
Streetcar Line  
Follansbee, WV  
to Steubenville, OH  
1904 Era**

*Courtesy of Fort Vance Historical Society*



Preparation for the street car lines to connect the future WV Rt. 2 to Steubenville, Ohio.

*Courtesy of Fort Vance Historical Society*



Preparation for the street car lines to connect the future WV Rt. 2 to Steubenville, Ohio.

*Courtesy of Fort Vance Historical Society*



Preparation for the street car lines to connect the future WV Rt. 2 to Steubenville, Ohio.

*Courtesy of Fort Vance Historical Society*



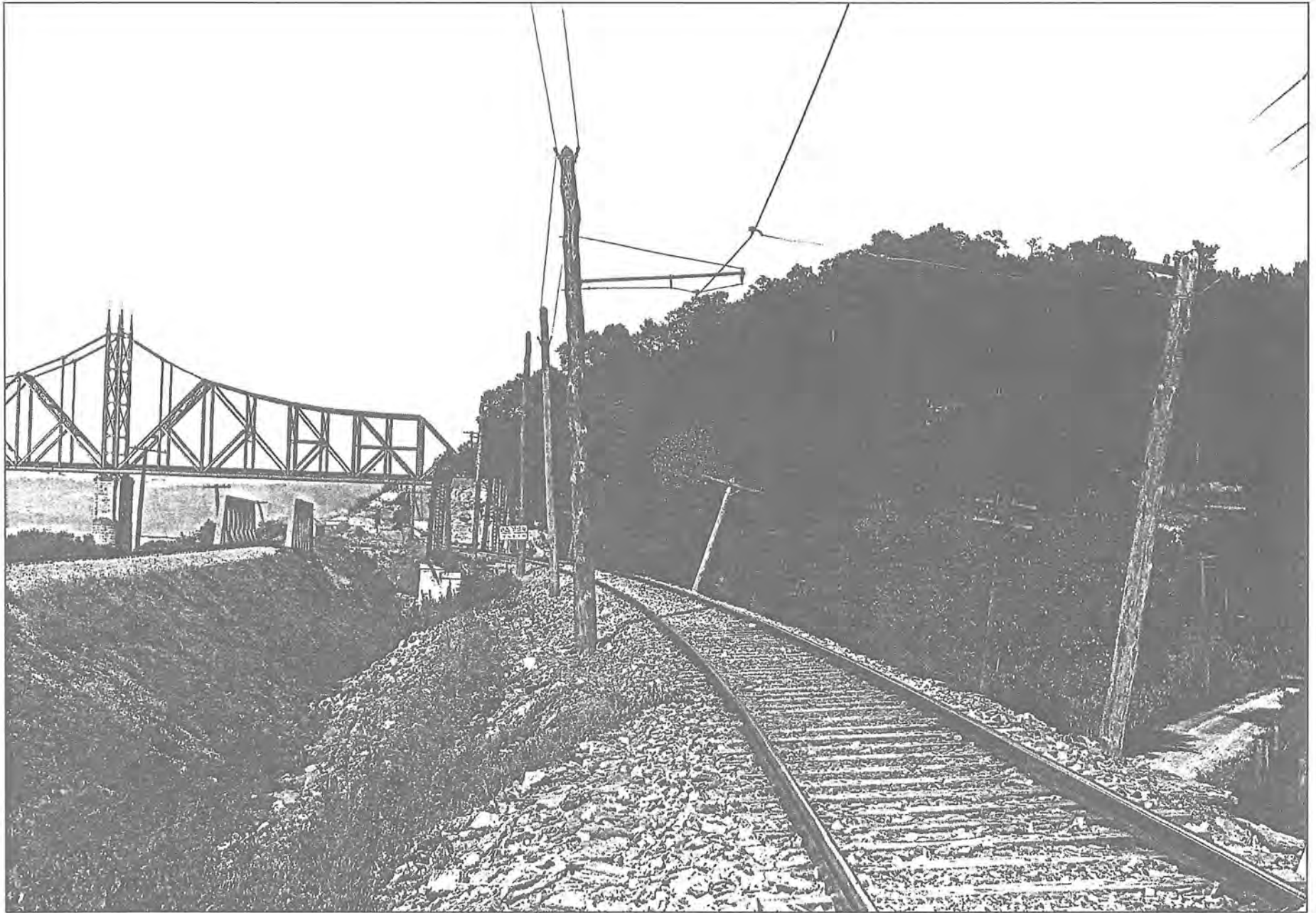
The entrance of Steubenville Bridge on right, connecting WV Rt. 22 and the Steubenville-Abt. 1904.

*Courtesy of Fort Vance Historical Society*



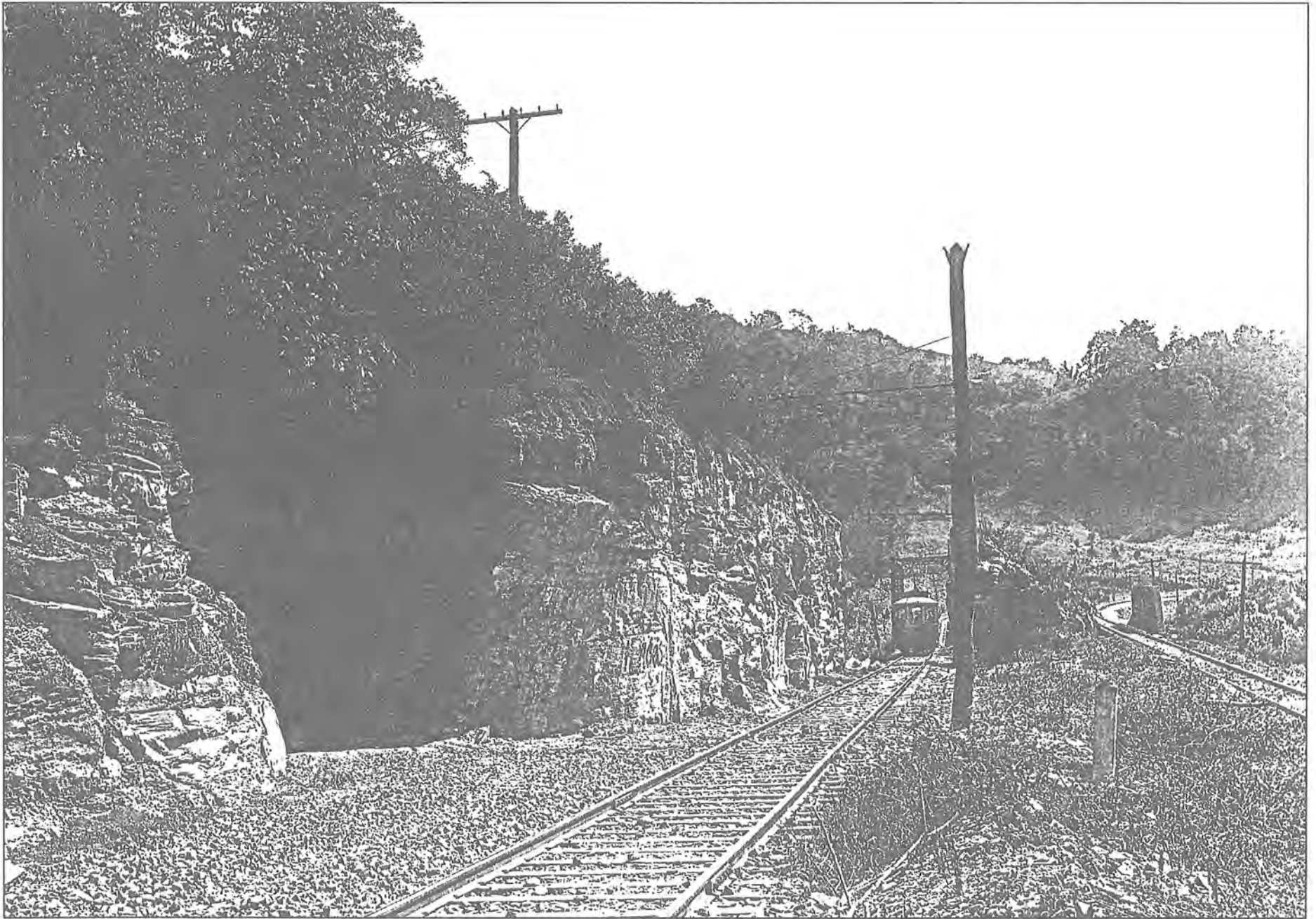
View approaching the street car tracks near Steubenville Bridge from Follansbee, WV. -Abt. 1904

*Courtesy of Fort Vance Historical Society*



A north view of the railroad tracks on the left and a view of the street car tracks on the right.

*Courtesy of Fort Vance Historical Society*



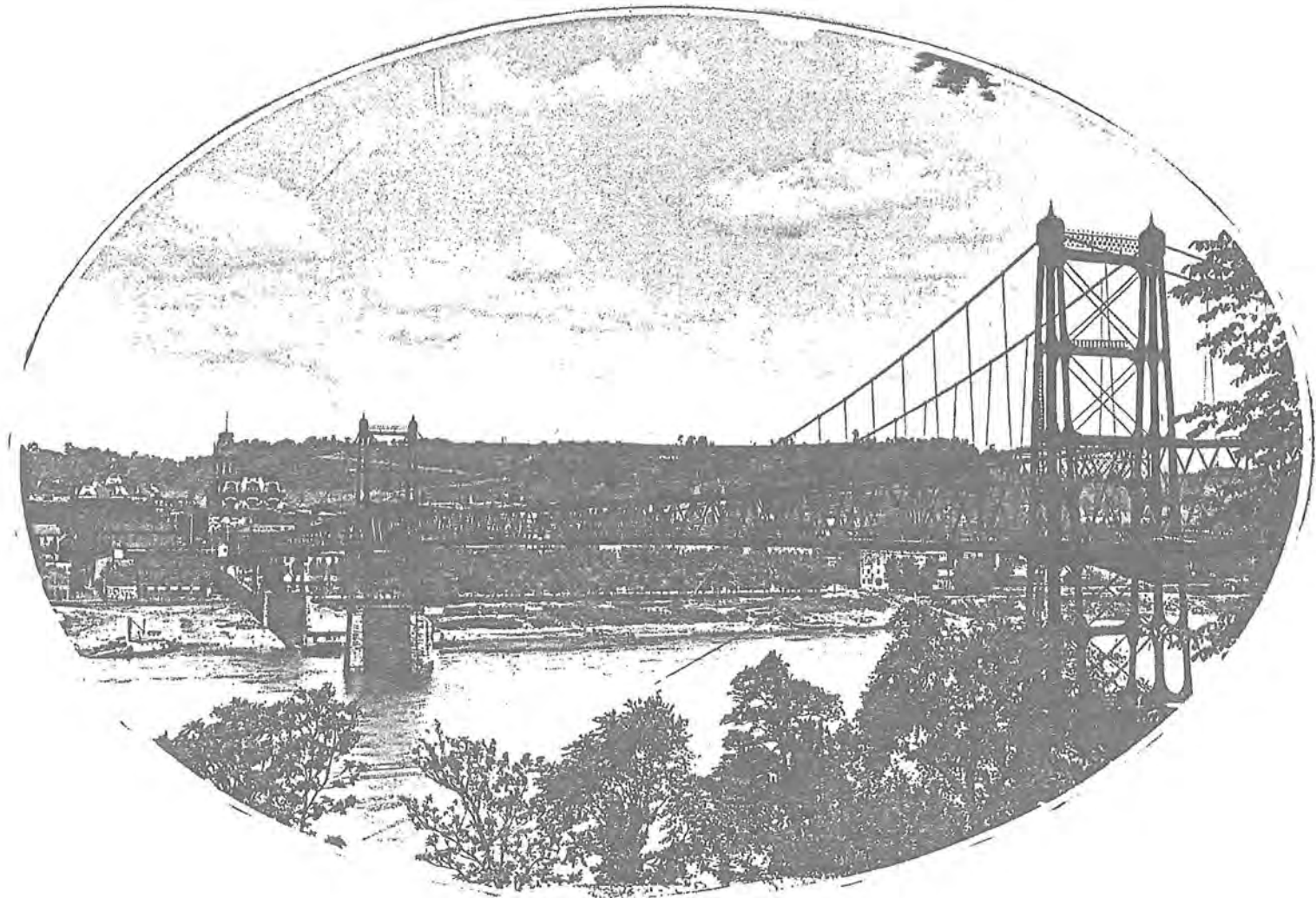
View of the streetcar line on the left.  
*Courtesy of Fort Vance Historical Society*





Rockslide affecting the streetcar lines.

*Courtesy of Fort Vance Historical Society*



View of the Steubenville Bridge. Later known as the Market Street Bridge.

*Courtesy of Fort Vance Historical Society*